



**ALASKA DIVISION OF HOMELAND SECURITY &
EMERGENCY MANAGEMENT**



SITUATION REPORT 22-039 • FEBRUARY 08, 2022

Toll-Free 1.800.478.2337

Anchorage Area 907.428.7000

SEOC 907.428.7100

<p><u>SEOC Preparedness Level</u> Level 2 – Heightened Awareness</p>	<p>http://ready.alaska.gov</p>	<p><u>National Terrorism Advisory System:</u> Read the updated NTAS Bulletin here</p>
<p><u>Maritime Security (MARSEC)</u> Level:1-Minimum Appropriate Security Measures</p>	<p>WHO Novel Coronavirus Pandemic (COVID-19): 2019 Novel Coronavirus</p>	<p><u>Alaska Military Installation Force Protection Level:</u> FPCON Bravo</p>

(Significant changes from previous situation reports are in red.)

Significant Issues:

SEOC at Level 2 – *Heightened Awareness* – Statewide Severe Weather Impacts

The State Emergency Operations Center (SEOC) remains activated in a hybrid virtual/in-person Incident Command structure to manage the current state declared disaster responses and other incidents arising statewide.

Threat Level Changes:

None

State of Alaska Department of Health and Social Services (DHSS)

DHSS is now leading the State of Alaska COVID-19 Recovery through Department Operations, supported by SEOC and other state departments as required.

For current COVID-19 information, see:

<https://covid19.alaska.gov/>

<https://www.cdc.gov/coronavirus/2019-ncov/index.html>

NTAS BULLETIN

The United States Department of Homeland Security has issued an updated National Terrorism Advisory Bulletin. To read the full bulletin please follow the below link.

To read current or expired advisories, click the link below:

<https://www.dhs.gov/national-terrorism-advisory-system>

Travel Alerts and Conditions

For current driving conditions dial 511 or link to <http://511.alaska.gov/>

Barry Arm Landslide / Tsunami Risk

For the latest information on the Barry Arm Landslide and Tsunami risk, click here:
[DGGG Barry Arm Landslide and Tsunami Hazard](#)

Recent Earthquakes

USGS Earthquake Information: <http://earthquake.usgs.gov/>
National Tsunami Warning Center: <http://tsunami.gov/>

Alaska Volcanoes

Davidof Alert Level: **Advisory** and Aviation Color Code: **Yellow**
Great Sitkin Alert Level: **Watch** and Aviation Color Code: **Orange**
Pavlof Alert Level: **Watch** and Aviation Color Code: **Orange**
Semisopchnoi Alert Level: **Watch** and Aviation Color Code: **Orange**
For Alaska Volcano updates, go to: <https://www.avo.alaska.edu/>

Air Quality Index (AQI) Advisories

For the most up to date Air Quality Index Advisories:
<http://dec.alaska.gov/Applications/Air/airtoolsweb/Home/Index>

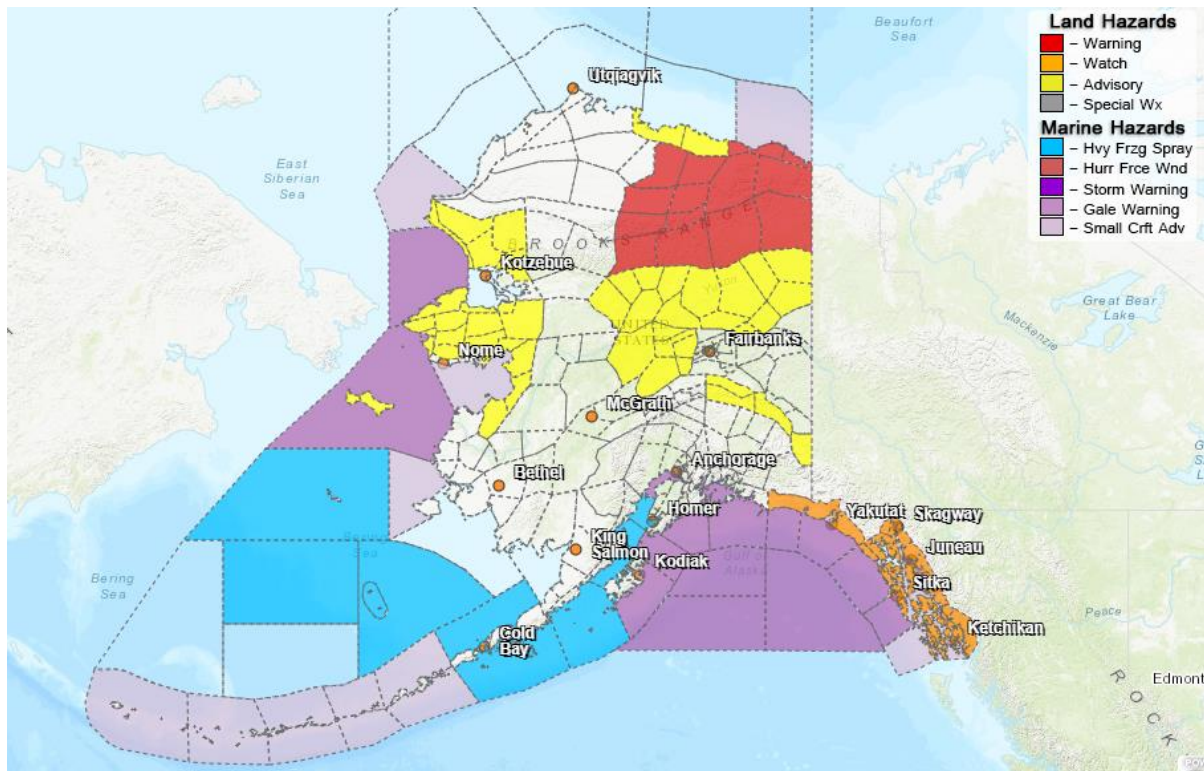
Spills of Oil and Hazardous Substances

The ADEC Spill Prevention and Response page is located at:
<http://dec.alaska.gov/spar/ppr/spill-information/response/>

Alaska Cyber Security Information

State Employees may sign up for cyber security notifications and alerts at
<https://oit.alaska.gov/security>

Significant Weather:



Wind Chill Warnings have been issued for the following areas:

- Eastern Beaufort Sea Coast – until 1:00 P.M. tomorrow. Up to -70°F
- North and Southeastern Brooks Range – until noon tomorrow. Up to -70°F

Wind Chill Advisories have been issued for the following areas:

- Eastern Norton Sound, Nulato Hills, Northern and Interior Seward Peninsula, and the **Lower Kobuk and Noatak Valleys** – until noon today. Up to -55°F
- **Central Beaufort Sea Coast** – until noon tomorrow. Up to -60°F

A High Wind Advisory is in effect from 9:00 P.M. today until 6:00 A.M. tomorrow for the Eastern Alaska Range. South winds 25 to 30 mph with gusts to 55 mph are expected.

Winter Weather Advisories have been issued for the following areas:

- Haines Borough – until noon today. 2 to 6 inches of snow mainly along the Haines Highway.
- St. Lawrence Island, Bering Strait Coast, and the Chukchi Sea Coast – until noon today. Blowing snow and cold wind chills are expected.
- Central Interior, Yukon Flats, and the Upper Koyukuk Valley – until noon today. Additional snow accumulations of 1 inch are possible with winds gusting to 30mph.
- Skagway and the Klondike Highway – until 6:00 P.M. today. 6 to 9 inches of snow.
- **Eastern Alaska Range** – until 9:00 P.M. today. 6 to 8 inches of snow.

A Flood Watch is in effect for the entire Southeast panhandle through Thursday morning. Flooding caused by excess rainfall and snowmelt continues to be possible across the region. Excessive runoff resulting in rises on streams along with localized urban flooding impacts are possible, especially in areas with poor drainage.

For more information and the most current weather, Watches / Warnings / Advisories go to: <http://www.weather.gov/arh>.

Avalanche Forecast:



There are areas near Thompson Pass and Valdez with considerable risk, Cordova with moderate risk, and Haines with high risk.

Check the Avalanche Forecast Center closest to your area for the most up to date information on avalanche potential. <https://alaskasnow.org> or <https://www.weather.gov/afc/avalancheweather>

The Next Situation Report: will be 09 February 2022. A significant change in the situation or the threat level will prompt an interim report.

This report is posted on the internet at <https://ready.alaska.gov/sitrep>. To register for email distribution, go to <http://list.state.ak.us/mailman/listinfo/dhsem.situation.report>. Direct questions regarding this report to the SEOC at 907-428-7100 or seoc@alaska.gov